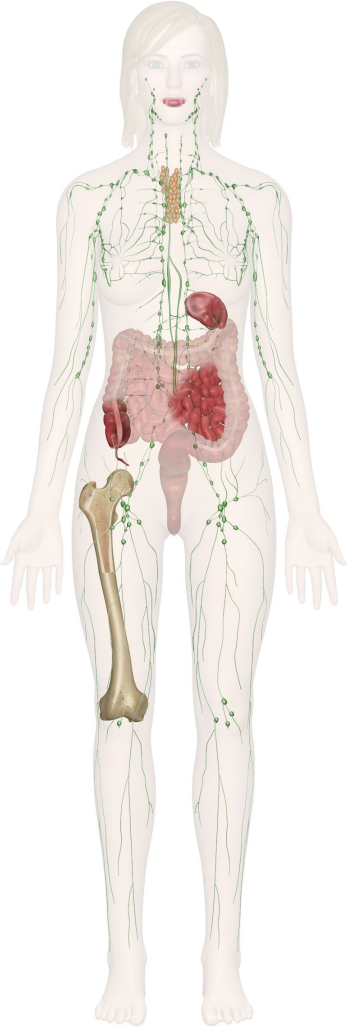
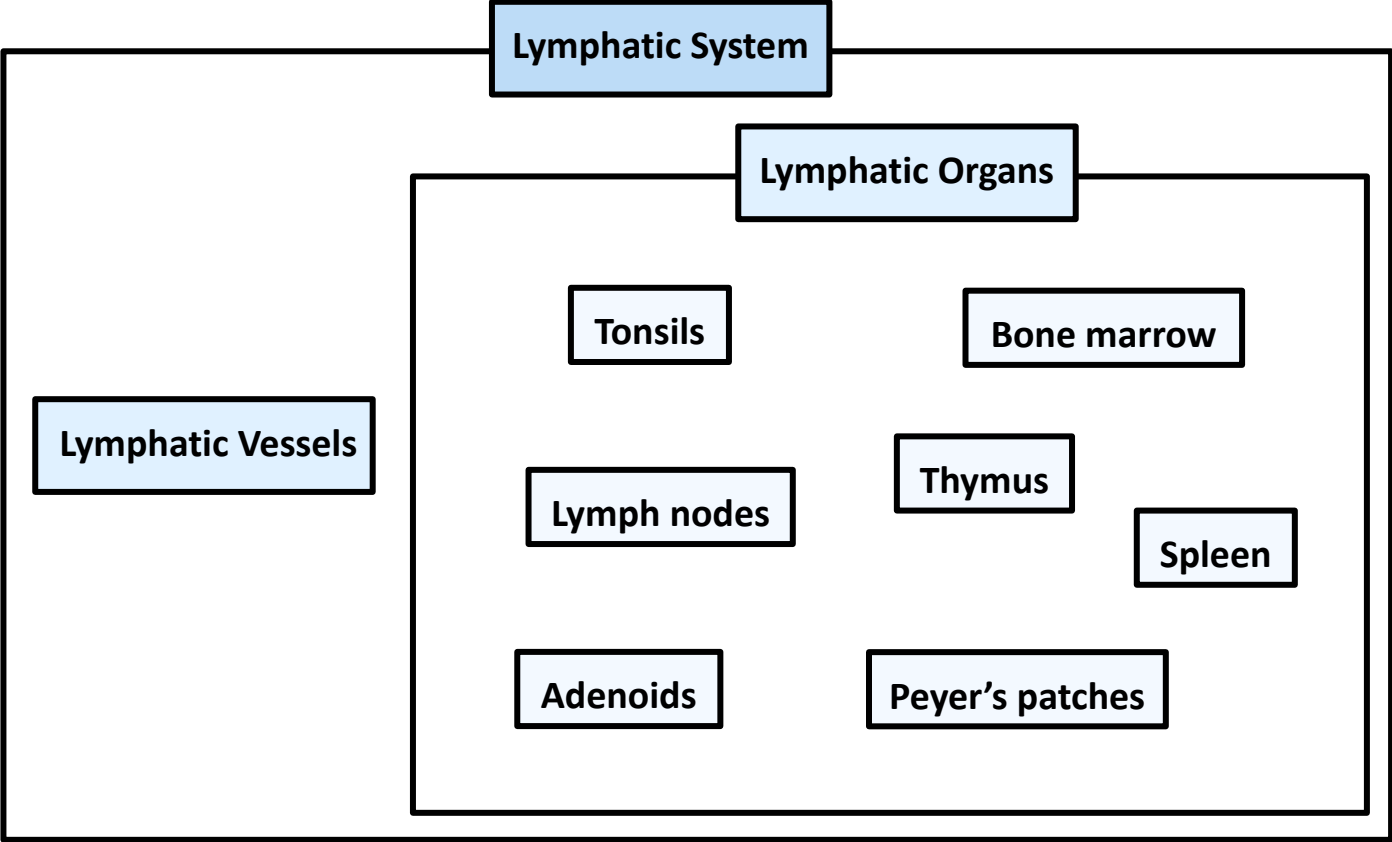
An anatomical illustration of the human lymphatic and immune systems. The image shows two human figures from the waist up, rendered in a light blue, semi-transparent style. Overlaid on these figures is a complex network of green lines and dots, representing the lymphatic system. The lines branch out from the neck and chest areas down to the arms and legs, with numerous small green dots (lymph nodes) scattered throughout the network. The background is plain white.

LYMPHATIC • IMMUNE SYSTEM

Alex Lim, Andy Oh, Jake Choi

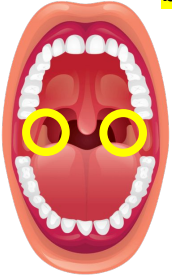
Lymphatic System



Form

Tonsils

Located on each side of the back of the throat



Spleen

Located next to the stomach and behind the left ribs



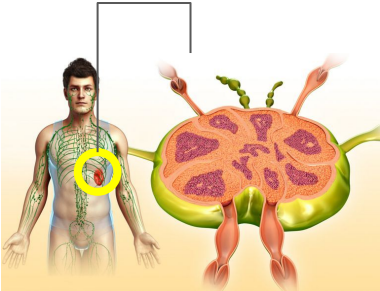
Thymus

Located between the lungs



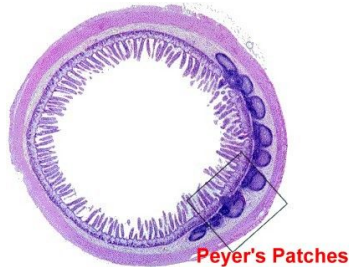
Lymph nodes

Located along the pathway of lymphatic vessels.



Peyer's patches

Located in the ileum area, which is in the small intestine.



Adenoids

Located high up in the throat and behind the nose



Bone marrow

Located inside the spine, hip and shoulder bones, ribs, breastbone, and skull



Function

Tonsils

Two lymph nodes that are located at the back of your throat. They function as a defense and prevent your body from getting infected.

Lymph nodes

The lymph nodes are important parts of the immune system. They filter harmful things like bacteria and cancer cells. They also help our body defeat the infections.

Spleen

The main function of the spleen is to filter the blood of our body. It controls the red blood cells.

Bone marrow

Bone marrow is a spongy part that is found in the center part of the bone. Its function is to produce blood cells and store fats.

Adenoids

Adenoids are a patch of tissues that are high up your throat. They are part of the lymphatic system. **Adenoids trap germs coming in through your mouth and nose.**

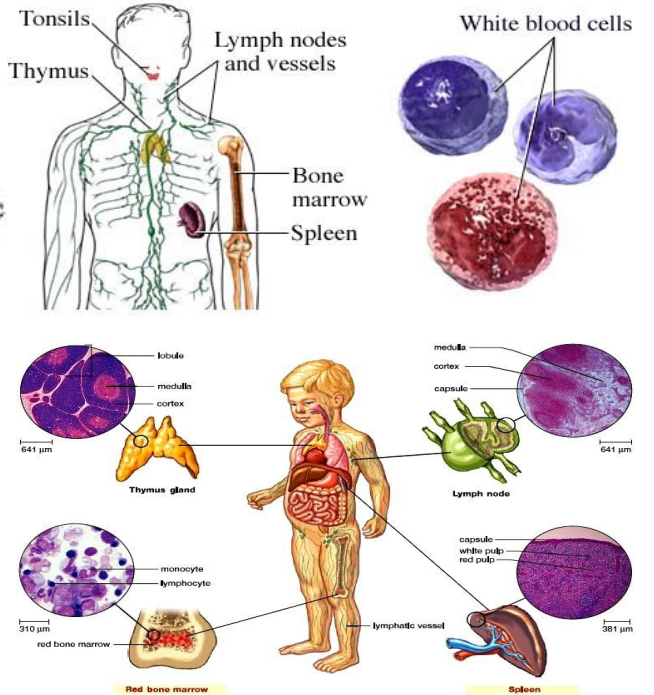
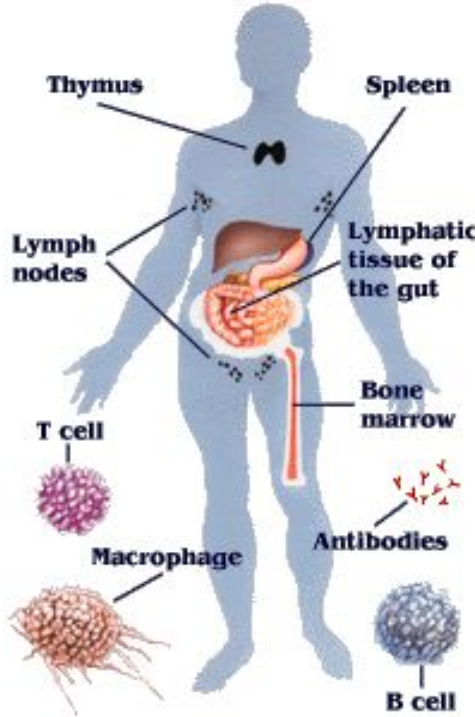
Thymus

Thymus plays an important role in the immune system. Its function is to develop T cells, which is an essential part of the immune system.

Peyer's patches

Peyer's patches are small amounts of lymphatic tissue. They form an important part of the immune system by **monitoring bacterial population and their growth**.

Supporting diagrams and pictures



Citations

MLA Format - Text/Web citations

MLA Format - Pictures/Diagram citations

“Immune and Lymphatic Systems – Anatomy Pictures and Information.” *Innerbody*, www.innerbody.com/image/lympov.html.

“3 Types of Mouthguards – Which One Fits You Best...” *Dentist Olds Alberta - General & Family Dentistry*, 10 Jan. 2019, westoldsdental.ca/3-types-of-mouthguards/.

Urfinguss, et al. “해골입니다. 이름 및 모든 사이트의 설명으로 척추 디스크. JS Translation Missing: stock_vector_art 987615892.” *IStock*, www.istockphoto.com/kr/%EC%9D%B4%EB%AF%B8%EC%A7%80/%EC%9D%B8%EA%B0%84-%EC%B2%99%EC%B6%94%EB%BC%88.

An Error Has Occurred, ssl.adam.com/content.aspx?productid=117.

Bailey, Regina. “Lymph Nodes Are More Than Bumps Under Your Skin.” *ThoughtCo*, www.thoughtco.com/lymph-nodes-anatomy-373244.